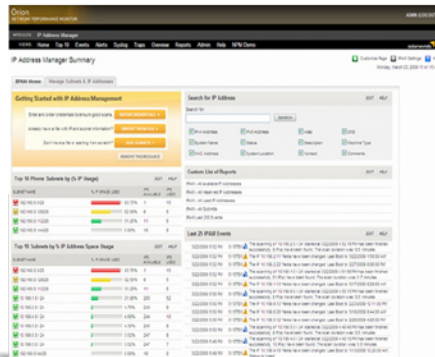


## Centralized IP Address Management That Doesn't Break the Bank

*“Love It, Love It,  
Love It.”*

- pguenther,  
posted on thwack,  
SolarWinds community site



Today's dynamic networks require you to keep a vigilant eye on your IP address space. Complex spreadsheets and home-grown solutions just don't cut it anymore — you need a solution that can give you comprehensive IP space visibility and help you prevent IP address conflicts from taking down network devices.

As the newest module of Orion Network Performance Monitor (NPM), Orion IP Address Manager (IPAM) allows you and your

team to ditch your spreadsheets for an easy-to-use, centralized IP address management solution that doesn't break the bank. Orion IPAM periodically scans the network for IP address changes and maintains a dynamic list of IP addresses, including non-responsive addresses. Orion IPAM leverages Orion NPM's intuitive point-and-click interface to allow engineers to easily drill down to investigate IP address space issues.

This makes it easy for you to plan for network growth, to ensure IP space usage meets corporate standards, and to reduce IP conflicts. Plus, you can easily coordinate team access to your IP space and track who made changes.

### Orion IPAM Highlights:

- **Manage your entire IP infrastructure** from an intuitive web-console
- **Consolidate your IP addresses** into a single repository
- Keep better records by **periodically scanning your network** for IP address changes
- **Create, schedule, and share reports** on the IP address space percent utilization
- Pinpoint and **eliminate IP address conflicts**
- Coordinate team access to your IP space with **role-based access control** and track who made each change
- Easily **identify non-responsive IP addresses** to optimize your IP space

## Orion IPAM Features

### Fault & Performance Integration

By integrating Orion IP Address Manager (IPAM) seamlessly with Orion Network Performance Monitor (NPM), we've delivered the comprehensive solution you need to easily and effectively manage your network. Finally, you can view your IP address space alongside fault and performance issues across complex, multi-vendor networks. Through a single web console, you can access both real-time availability statistics and performance history for all of your network devices, providing the complete network management solution that you've been searching for.



### Scheduled Scanning

Not all subnets are the same, so why would you scan each of them with the same settings? Orion IPAM allows you to periodically scan a subnet as frequent as 10 minutes to as slowly as 7 days. Moreover, you can schedule each scan independently by subnet so your mobile subnets will always be updated without rescanning those subnets with mostly static IPs.

### Top 10 Subnets Used

Orion IPAM leverages the Orion Top 10 lists you love to make it easy for you to see the IP allocation for each of your subnets. Top 10 lists display the subnet name, a bar graph showing what percentage of IP space is used, how many IPs are available, and how many IPs are used in a given subnet.

### Scan Segmentation

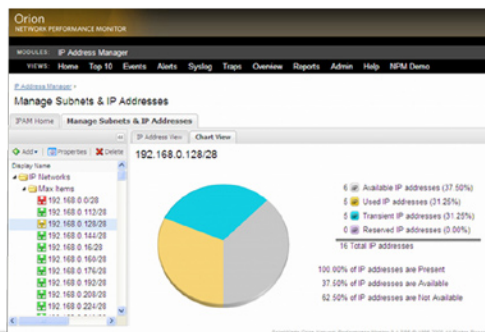
While we think you'll love Orion IPAM's easy-to-use interface for managing your IP space, we recognize that some IPs just want to be left alone. With Scan Segmentation, Orion IPAM allows you to selectively pick which IPs you want to manually manage and which ones you want automatically managed. That way, you can manually manage IPs in your DMZ where ICMP & SNMP are not allowed, but still automatically manage your dynamic mobile IPs.

### Subnet Allocation Wizard

Orion IPAM provides a Subnet Allocation Wizard to help you efficiently organize your managed IP address space into subnets that are sized appropriately for the extent and traffic of your network. With its real-time subnet calculator, the Orion IPAM Subnet Allocation Wizard allows you to quickly determine the most efficient way to subdivide any supernet.

*“Easy to install,  
up and running  
very quickly.”*

- fluxeon, posted on thwack,  
SolarWinds community site



### Subnet Snapshot

Managing a handful of IP addresses is easy, but toss in several hundred, let alone, several thousand IP addresses and you've got a real IP space nightmare. How do you keep tabs on each subnet to make sure an IP conflict is not looming around the corner? Rest assured that despite having multiple engineers adding and removing IP addresses, you'll always have an easy view into each of your subnets to ensure it is optimally allocated.

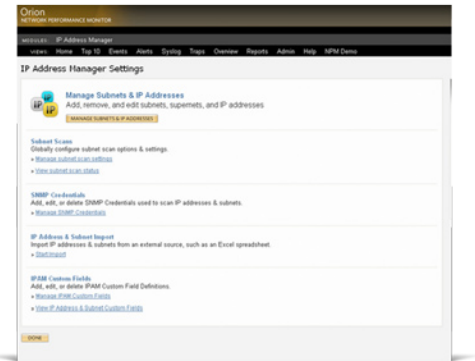
MODEL	MANAGED IPS:
IP1000	1024
IP4000	4096
IP16000	16384
IPX	Unlimited

### Detailed Event Recording

Managing an IP space by yourself is challenging, but when you have a team of network engineers, the real fun starts! How can you make sure each engineer is aware of each other's changes? How can you check who made an IP change or modified a subnet? With spreadsheets, all bets are off, and you are simply at the mercy of each person notifying everyone else when changes are made. With Orion IPAM, each IPAM-related change is recorded in detail so that other users can simply check an activity log. You can relax, knowing that your team of network engineers will spend their time managing the network instead of managing an IP address spreadsheet!

### User-Defined Grouping

Orion IPAM provides groups to help your team organize IP space. The drag-and-drop user interface makes it easy to immediately create groups that may contain any number of other groups, supernets, subnets, or individual IP addresses. Using Orion IPAM, you can group all the various network components related to each department of each branch office into its own group. This allows a local branch network engineer to manage his/her own IP addresses without impacting other branch offices.



### Global Search

From Orion IPAM's advanced web console, you can perform a global search for any specific IP address or wildcard expression with a partial IP address. Within seconds, an interactive list returns allowing you to link directly to manage the subnet for that specific IP address. Additionally, you can edit IP address properties and set the status of the selected IP address.

### Engineer's Toolset Integration

If you have both SolarWinds Engineer's Toolset and Orion IPAM, you can leverage the functionality of the powerful troubleshooting tools in Engineer's Toolset directly from Orion IPAM simply by using the "right-click" mouse option or by selecting a tool from the Orion IPAM toolbar. Powerful applications from Engineer's Toolset, such as IP Network Browser, Real-Time Interface Monitor, and MIB Browser, are available in the toolbar by default; plus, you can easily customize the toolbar to include direct access to any tool within the Engineer's Toolset.

### Flexible Reporting

Using the powerful capabilities of Orion Report Writer, IPAM data can be easily extracted and presented in a useful format. Orion Report Writer allows you to format your data exactly to your specifications and preview reports before you display them. When you have finished editing your reports, you can use the scheduler tool to schedule distribution of reports via email and to enable people to view them through the Orion web console.

### Orion NPM Modules:

- Application Performance Monitor
- IP Address Manager
- NetFlow Traffic Analyzer
- VoIP Monitor

Orion NPM modules extend the capabilities of Orion NPM to network traffic analysis, IP address management, VoIP monitoring, and application and server monitoring.

### System Requirements

As an Orion module, Orion IPAM requires an installation of Orion Network Performance Monitor. The system requirements for Orion IPAM do not exceed Orion NPM requirements.