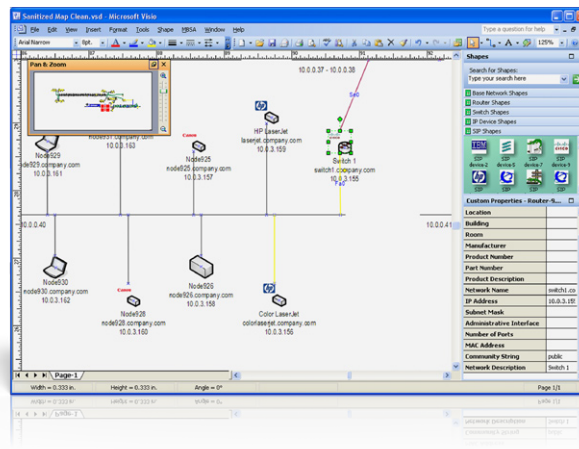




Automatically Discovery & Diagram Your Network with LANsurveyor

*“LANsurveyor 10 is an impressive network management package, boasting **features that are usually only found on packages costing three times the price.**”*

*— IT Week,
4 Star Review
of LANsurveyor*



Finally, you can put down your white board markers and relax while LANsurveyor® does the network mapping.

Leveraging a unique multi-level discovery technique, LANsurveyor discovers your LAN or WAN and produces comprehensive, easy-to-view network diagrams that integrate OSI Layer 2 and Layer 3

topology data (including switch-to-switch, switch-to-node, and switch-to-router port connections). With two mouse clicks, this data can be exported into Microsoft Office® Visio® and easily shared with your colleagues.

Additionally, LANsurveyor will automatically track and account for changes to the network in real time with a unique continuous scan feature that can immediately detect new devices on the network and dynamically update the network map.

LANsurveyor Highlights:

- Automatically discover and diagram network topology
- Generate network maps in Microsoft Office® Visio®
- Automatically detect new devices and changes to network topology
- Perform inventory management for hardware and software assets
- Directly address PCI compliance and other regulatory requirements

LANsurveyor Features

Auto-generate Network Maps

LANsurveyor automatically discovers every device on your network, including routers, switches, servers, wireless access points, VoIP phones, desktop computers, and printers. LANsurveyor uses industry-standard identification and network discovery methods (ping/ICMP, SNMP, SIP, NetBIOS and more) to scan IP address ranges and find nodes.

LANsurveyor's automatic network discovery can identify and scan all the network segments connected to your routers—or you can choose to perform automatic network discovery on specified segments. You simply enter the IP address range(s) and SNMP community strings, and LANsurveyor automatically starts network discovery.

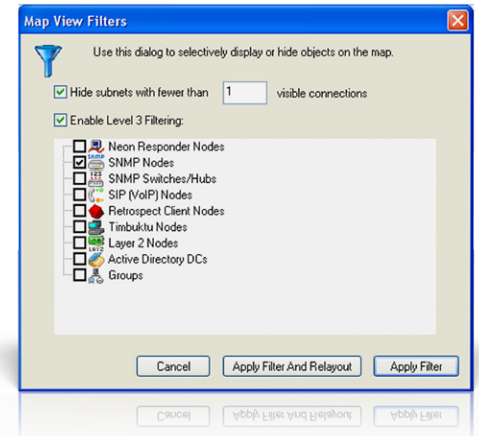
Once network nodes are discovered, LANsurveyor compiles the information into cohesive, easy-to-view network maps with node icons, colored lines representing network connectivity speed, and labels indicating switch port information. In addition, LANsurveyor features a standard Switch/Hub Ports Report that provides a table of information about all connected nodes.

Export Network Maps to Visio®

After LANsurveyor has automatically discovered your network and produced a network diagram, this network diagram can be exported into Microsoft® Visio format with just two mouse clicks. Exporting LANsurveyor network diagrams into Visio format automatically populates Visio SmartShapes with network discovery data – a huge timesaver! SmartShape technology is used to represent network devices, automatically populating each node's custom properties with the node's IP address, network name, fully-qualified domain name (FQDN), and more. Support for SmartShapes also means that you can use Visio's built-in network device reports and integrate with the Microsoft Baseline Security Analyzer (MBSA) plug-in for enhanced network security.

Inventory Management

LANsurveyor quickly and easily compiles complete documentation of all devices on the network, including network hardware and Windows®, Linux, and Macintosh® servers, workstations, and desktops. Adding optional Responder Clients enables LANsurveyor to deliver detailed inventory and system data, such as application programs, OS versions, CPU utilization, RAM, disk volume capacity, and available disk space. Network inventory is automatically stored in a local Microsoft SQL Express database or in the centralized Microsoft SQL Server CMDB you specify. You can use built-in LANsurveyor reports to access your complete network inventory or use third-party software, even when client nodes are offline, since the data is stored in a standard database format.



*“LANsurveyor is invaluable for accurately diagramming and troubleshooting large, two thousand-plus node networks. I use and **recommend LANsurveyor at all my enterprise sites.**”*

— Russ Cartwright,
Consultant, Intellinet

Auto-detect Changes

LANsurveyor's unique continuous scan feature monitors the network for new devices, changes and unknown systems. Changes are immediately reflected in your network diagram, ensuring that you always have an accurate, up-to-date record of your network topology. When unknown and rogue systems are identified, LANsurveyor alerts IT personnel and/or third-party software applications that a change has been detected and optionally disables network access for the device.

Ensure Regulatory Compliance

LANsurveyor directly addresses PCI DSS requirement 11.2 for maintaining a network diagram of all connections to cardholder data and keeping the network diagram current. Additionally, Sarbanes-Oxley, GLBA, HIPAA, US FDA 21 CFR Part 11 and other regulations require preventive and detective controls. LANsurveyor provides these controls automatically by mapping the network, alerting IT to changes on the network, and enforcing network access control by optionally blocking unknown devices.

Node Name	Machine Type	Vol Name	Vol Throughput (GB/hr)
VISTA0M	Virtual Platform (C)		9
JAME_SALES	Dimension 2400 (C)		1.2
Parther	Mac	USB 19000	1.2
WESHPCDEK	EL466AA-ABA a1330n (C)		1.5
WESHPCDEK	EL466AA-ABA a1330n (C)		1.7
CASSANDRA	Dell DUPO51	System (C)	1.8
ACCOUNTING-CELL	LI00V (C)		1.9
CASSANDRA	Dell DUPO51	Data (D)	2.2
Internet Server	Mac	WS Extra	2.3
FRONT_DESK	Dimension 2400 (C)		2.4
Frank	Power Macintosh G3...	Neon Software	2.4
QH	PowerEdge 700 (C)	Backup (F)	2.4
QH	PowerEdge 700 (C)	ITB Backup (B)	2.5
Internet Server	Mac	WWW Neon Software	2.6
QH	PowerEdge 700 (C)	Offsite Backup 1 (N)	2.7
asterisk.neon.com	PowerEdge 1850 (C)		2.8
asterisk.neon.com	PowerEdge 1850 (C)	jderydm	2.8
SUNRPC	Dell DUPO51 (C)		3.0
Wayne	Power Macintosh G3...	Wayne	3.0
Wayne	Power Macintosh G3...	Mac OS 8.8	3.0
Wayne	Power Macintosh G3...	Mac OS Extra	3.0
asterisk.neon.com	PowerEdge 1850 (C)		3.0
QH	PowerEdge 700 (C)	BOOT (C)	3.1
QH	PowerEdge 700 (C)	DB (E)	3.7
NECOM-QA	Dimension 4700 (C)		4.5
Parther	Mac	Parther	9.0
bettyjo	Intel Pentium (C)		9.8
QAMac's PowerMacG...	Power Macintosh	QA Tiger	13.0
nrlinux	Dimension 3000 (C)		21.9
nrlinux	Dimension 3000 (C)		22.8
QAMac's PowerMacG...	Power Macintosh	QA Parther	22.0
nrlinux	Dimension 3000 (C)	jderydm	23.5

Additionally, LANsurveyor's continuous scan functionality generates archival network topology diagrams automatically; this enables you to provide standards compliance documentation for today's audit, while preserving prior audit compliance documentation for comparison and evaluation.

Responder Clients

LANsurveyor Responder Clients greatly enhance the functionality of LANsurveyor by providing device inventory and direct access to networked computers. Responder Clients enable LANsurveyor to provide complete hardware and software asset reports, distribute software, and directly manage the client computers, either individually or as a group. With Responder Clients, LANsurveyor can remotely manage all Windows®, Linux, and Macintosh® clients, including tasks like distributing software, launching and quitting software applications, shutting down and restarting, and performing clock synchronization.

System Requirements

- Windows 2000, 2003, XP, or Vista (Workstation, Professional, or Server Edition)
- 256 MB of memory (or more depending on the size of your network)
- Visio 2002 or newer for Visio export
- The SNMP Community String for your devices

"LANsurveyor not only makes quick work of documenting networks, it also scans for changes to the network. In our tests, LANsurveyor highlighted network changes, making it easy to see new devices added to the network."

— TMC Labs,
Editor's Choice Award

For additional information, please contact SolarWinds at 866.530.8100 or e-mail sales@solarwinds.com. To locate an international reseller near you, visit www.solarwinds.com/distributor/locator.html