

# OBSERVER<sup>®</sup> 13

## New Features Guide

Application Performance Monitoring

Enhanced GigaStor Interface

Expanded Application Visibility

NetLive

NetFlow

Financial Analysis

GigaStor File Structure

Data-Stream Reconstruction

Data-at-Rest Security

Expanded Topology Support



From Observer Reporting Server's customizable, high-level reporting features to increased GigaStor™ performance and expanded wireless and topology support, Observer 13 provides major new features that will excite new users and Observer pros alike. Download a demonstration version at [www.networkinstruments.com](http://www.networkinstruments.com), and test-drive the latest in performance monitoring.

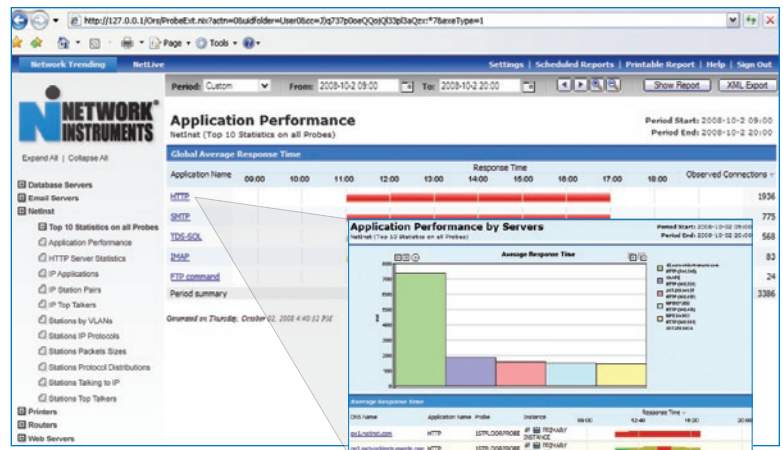
## Application Performance Monitoring

Use Application Performance Monitoring to graphically track application performance and perform quick next-step analysis. Performance is presented on a color-coded scale of good to poor, allowing periods of poor performance to be easily identified. Additionally, the height of the color-coded bars indicates traffic volume.

From top-layer application reports, engineers can drill down to specific host servers or conversations to identify sources contributing to poor performance. Couple this with new auto-baselining in the Observer Reporting Server (ORS) for a more powerful performance monitoring solution that establishes baselines and thresholds and identifies when thresholds are exceeded.

### Performance Monitoring Benefits:

- Understand critical application performance at a glance
- Track and quickly identify time periods of poor performance
- Perform single-click root-cause analysis from application-level reports
- Automatically establish performance benchmarks and thresholds
- Easily identify when application performance exceeds thresholds



Single-click root-cause analysis from application-level reports

Application Performance Monitoring is available with Observer Expert, Observer Suite, Expert Probes, and ORS. Auto-baselining is available with ORS.

## Enhanced GigaStor Interface

The new GigaStor Active Reporting feature includes powerful drill-down capabilities, customizable next-step analysis, and immediate report generation—all designed to reduce mean time to resolution. From the selected time-period view, engineers drilling into network and application metrics can determine the next step of their investigation by choosing from an extensive list of related reports. Based upon the investigation at hand, automatic filters are dynamically created to speed root-cause analysis.

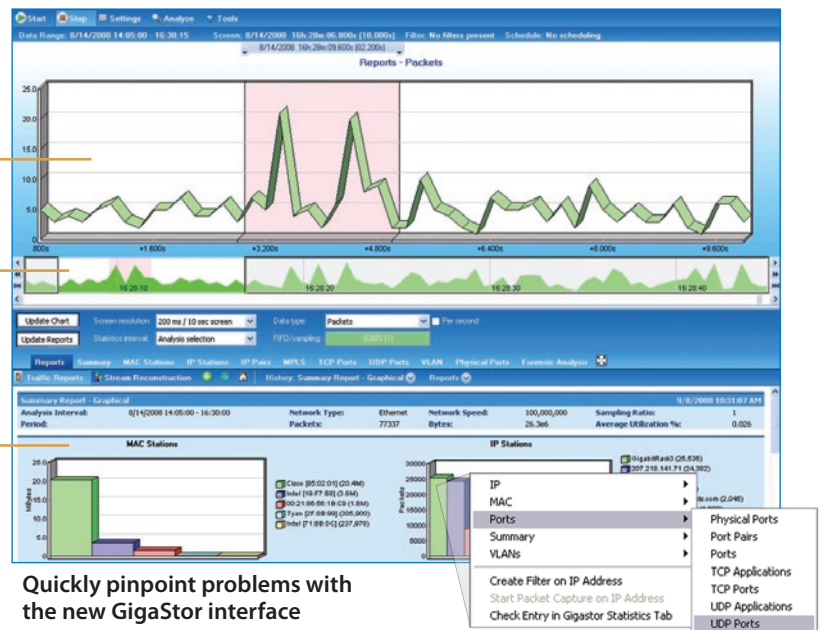
Upgrades to the time-navigation interface improve problem identification. New macro and micro timeline views provide users both a big-picture view and a micro view to quickly pinpoint problems.

Available with GigaStor.

Micro

Macro

Customize GigaStor reports



Quickly pinpoint problems with the new GigaStor interface

## Expanded Application Visibility

Observer 13 provides greater accuracy and in-depth tracking of application performance and errors.

### Stateful Packet Inspection

Stateful packet inspection allows network managers to accurately identify protocols or activities traversing a specific port through in-depth packet inspection. For example, stateful packet inspection can verify that application traffic flowing across port 80 is legitimate HTTP-based activity rather than unauthorized BitTorrent use.

### Track HTTP by URL

As web services on the network increase, tracking performance by Internet Protocol (IP) or virtual IP is no longer adequate. New URL-based performance reporting monitors response times, volumes, utilization, and site-specific statistics.

#### Use URL-based Tracking to:

- Monitor performance of a single URL hosted by multiple servers
- Individually track multiple URLs hosted on a single server
- Track sub-domain performance and usage metrics

Available in Observer Expert, Observer Suite, and ORS.

Server URL	Response Time Average (ms)	Response Time Max (ms)	Total Requests	Latest Request Time	Request Packets
www.youbet.com/80 (HTTP) 39	100.787	141.361	58	1/5/2007 10:07:26	204
/	101.085	101.085	1	1/5/2007 10:07:22	15
/content/	95.112	111.029	8	1/5/2007 10:07:23	45
/flash/ogphoto_belowl	110.921	110.921	1	1/5/2007 10:07:24	36
/images/	98.544	122.115	12	1/5/2007 10:07:25	26
/images/IRG_small_logo_bottom.gif	113.150	113.150	1	1/5/2007 10:07:25	2
/images/NetStatBtrNet-over.gif	93.612	93.612	1	1/5/2007 10:07:26	2
/images/NetStatBtrNet.gif	94.971	94.971	1	1/5/2007 10:07:26	2
/images/NetStatBtrNormal-over.gif	93.846	93.846	1	1/5/2007 10:07:26	2

### Track HTTP performance by URL domain and sub-domain

## NetLive

NetLive answers the need of larger organizations for TopN enterprise-wide visibility in real time.

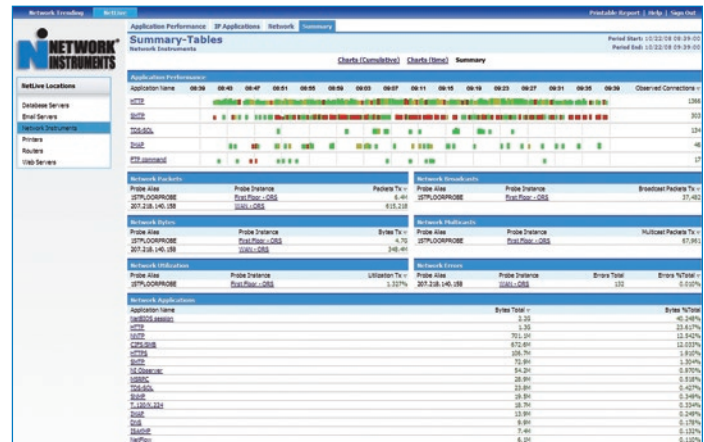
NetLive, within the Observer Reporting Server, presents high-level, network-operation-center (NOC) views of network and application performance in real time. Use NetLive to assess network conditions and pinpoint concerns. From these views, drill down and isolate network problems.

Customize NetLive's application, network, and infrastructure performance views and reports to present only metrics you care about. Share NetLive reports via secure web login.

#### Use NetLive to:

- Receive real-time views of network and application health
- Track critical response times, usage, and TopN metrics
- Drill down within NetLive to investigate high-level problems

Available with the Observer Reporting Server.



### Real time TopN enterprise-wide visibility

## NetFlow

For organizations looking to leverage NetFlow enterprise-wide, Network Instruments offers enhanced NetFlow support. The NetFlow Trending Instance offers superior scalability, allowing engineers to configure up to 512 NetFlow devices per collection device.

Using Network Instruments' Advanced Expert Probe as a NetFlow collector, organizations can monitor high-level performance metrics, including real-time statistics like Top Talkers, bandwidth usage, and long-term network trends.

Available with Observer Expert, Observer Suite, and Expert Probes.

## Financial Analysis

Observer 13 includes components designed specifically for financial organizations. These institutions have particular monitoring requirements that differ greatly from the average company. For example, the effectiveness of a trade is measured in milliseconds, not minutes, necessitating drill-down capabilities to a finite moment of time.

#### Several new features address the financial sector's unique needs:

- In-Depth FIX Analysis – Monitor trade-level errors and statistics as well as trade execution and performance
- Expanded Financial Protocol Support – Decode and support for 29West and NASDAQ trading protocols
- Microburst Analysis – Meets the financial sector's need for nanosecond detail

FIX analysis is available within Application Transaction Analysis in Observer Expert and Observer Suite. 29West and NASDAQ trading protocol decodes and support are available with all Observer consoles.

Order Type	Response Time(s) Min	Response Time(s) Max	Response Time(s) Average	Total Requests	Latest Request Time
12:125:92:148 (FD)	0.244	7473.290	2810.936	42593	4/3/2007 10:57:14
Order - Single	9.209	3630.601	506.141	21454	4/3/2007 10:57:14
Execution Report (Full Replaced)	343.405	3630.601	2241.387	5	4/3/2007 09:02:26
Execution Report (None)	9.209	681.325	27.556	21447	4/3/2007 10:57:14
Execution Report (Partial III Replaced)	217.846	798.117	506.481	2	4/3/2007 09:18:42
Order Cancel Request	0.244	657.722	33.376	21048	4/3/2007 10:57:14
Execution Report (Cancelled)	8.363	657.722	32.379	20984	4/3/2007 10:57:14
Order Cancel Request	0.244	656.468	34.372	464	4/3/2007 10:57:14
Other Messages	7473.290	7473.290	7473.290	1	4/3/2007 19:00:04
Logon	7473.290	7473.290	7473.290	1	4/3/2007 19:00:04
172.28.62.7 (FD)	0.343	324.694	219.654	29	4/3/2007 10:53:57
Execution Report	0.343	324.694	219.654	29	4/3/2007 10:53:57
Order - Single	0.343	324.694	198.095	18	4/3/2007 10:53:57
Order Cancel Request	218.743	307.189	240.213	11	4/3/2007 10:53:57

### Track trade executions and performance

## GigaStor File Structure

The new GigaStor File Structure has been optimized to handle the high demands of retrospective network analysis. Existing GigaStor users will notice significantly increased performance with data mining and analysis.

### Benefits of the GigaStor File Structure:

- Eliminates fragmentation concerns
- Improved performance and reliability
- Faster data mining and analysis

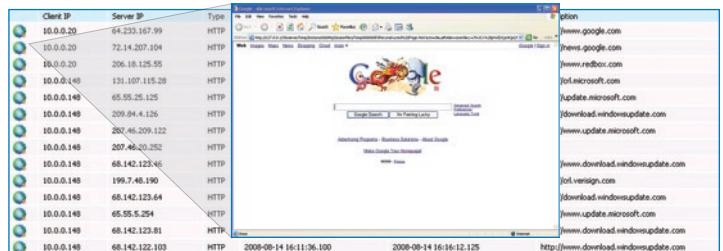
Available with the GigaStor.

## Data-Stream Reconstruction

The new data-stream reconstruction interface and workflow simplifies and streamlines the file reconstruction process. Automatically detect and reconstruct relevant files when gathering evidence or investigating suspicious network activities.

Use data-stream reconstruction to recreate communications, web pages, e-mails, and instant messages.

Available with Observer Expert, Observer Suite, and GigaStor.



Quickly reconstruct web pages and communications with the new stream reconstruction workflow and interface

## Data-at-Rest Security

Encrypt data stored on the GigaStor using the Advanced Encryption Standard (AES) to ensure information security. AES is required by some U.S. government agencies and can be important for companies concerned about PCI and HIPAA regulations.

Available with the GigaStor.

## Expanded Topology Support

For large organizations and carriers monitoring OC topologies, Observer provides monitoring and analysis of OC-3c and OC-12c and decodes OC-related protocols. Observer supports Packet over SONET (POS), asynchronous transfer mode (ATM) over OC, and ATM over SONET.

Network Instruments continues to develop its in-depth WLAN analysis capabilities by supporting the emerging wireless standard 802.11n.

### Use Observer Wireless Analysis to:

- Monitor signal strength and quality
- Compare wired to wireless performance
- Detect rogue access points
- Conduct wireless site surveys

OC-3c/OC-12c support is available with Observer Expert and Observer Suite consoles in conjunction with an OC Probe. 802.11n support is available in all Observer consoles and probes.

### About Network Instruments

Network Instruments provides in-depth network intelligence and continuous network availability through innovative analysis solutions. Enterprise network professionals depend on Network Instruments' Observer product line for unparalleled network visibility to efficiently solve network problems and manage deployments. By combining a powerful management console with high-performance analysis appliances, Observer simplifies problem resolution and optimizes network and application performance. The company continues to lead the industry in ROI with its advanced Distributed Network Analysis (NI-DNA™) architecture, which successfully integrates comprehensive analysis functionality across heterogeneous networks through a single monitoring interface. Network Instruments is headquartered in Minneapolis with sales offices worldwide and distributors in over 50 countries. For more information about the company, products, technology, NI-DNA, becoming a partner, and NI University please visit [www.networkinstruments.com](http://www.networkinstruments.com).

### Solution Bundles

Contact a Network Instruments representative or dealer to ask about product bundles that cover all of your network management needs.



### Corporate Headquarters

Network Instruments, LLC • 10701 Red Circle Drive • Minnetonka, MN 55343 • USA  
toll free (800) 526-7919 • telephone (952) 358-3800 • fax (952) 358-3801

[www.networkinstruments.com](http://www.networkinstruments.com)

### European Headquarters

Network Instruments • 7 Old Yard • Rectory Lane • Brasted, Westerham • Kent TN16 1JP • United Kingdom  
telephone + 44 (0) 1959 569880 • fax + 44 (0) 1959 569881

[www.networkinstruments.co.uk](http://www.networkinstruments.co.uk)