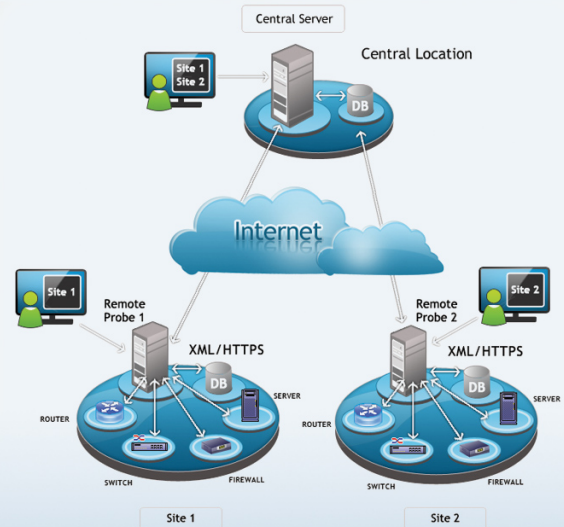


# Enterprise Edition

OpManager Enterprise Edition allows you to scale as your network grows, without much hassles. This edition is designed with Central-Probe architecture with scalability as the main focus. OpManager Enterprise Edition supports over 50,000 interfaces and 600,000 monitors. It offers end-to-end network monitoring and advanced fault and performance management across WAN, VoIP services, network devices, servers, applications, databases and other IT infrastructure such as printers, UPS etc. It is easy-to-install, easy-to-use, and works right out-of-the-box.



## Major Highlights:

- Supports 50,000 interfaces and 600,000 performance monitors
- Provides a centralized console to visualize performance hiccups across the entire IT infrastructure
- No more feature catch-ups! Always in sync with the features, functions, and upgrades offered by OpManager standalone version

### Remote IT management

- Gain control over remote networks via a centralized console
- Generate reports for:
  - Interface availability statistics | Interface traffic and utilization statistics | Interface response time statistics
  - Interface errors and discards
- Group devices based on regions
- Generate site based reports
- Receive site specific alarms

### Network Management

- Automatically Map networks with Layer 2/ Layer 3 network discovery
- Spot traffic trends using Network weather maps
- Monitor Interface availability, Traffic, utilization and error statistics
- Monitor routers, switches, firewalls, WAN accelerators and Wireless access points
- Monitor WAN links and VoIP QoS using Cisco IP SLA
- Analyze network traffic using NetFlow, sFlow - NetFlow plug-in.
- Manage network change and configuration changes using NCCM plug-in
- Detect and prevent broadcast storms (worms) in the LAN

### Server & Services Monitoring

- Monitor Windows, Linux, UNIX, HP-UX and IBM AIX server out-of-the-box.
- Monitor CPU and Memory utilization
- Monitor partition-wise disk utilization
- Monitor critical hardware parameters on Dell, HP and IBM servers.
- Monitor VMware ESX Servers
- Know your Top Attacks, URLs, denied requests, Security Events etc using Firewall Analyzer integration.
- View active processes and installed software details
- Monitors services such as HTTP, SMTP, IMAP, FTP, DNS, LDAP, HTTPS etc.
- Monitor Processes, URLs and Files/ Folders

### Microsoft Infrastructure Monitoring

- Monitor Exchange
- Monitor Active Directory
- Monitor SQL
- Monitor Windows Services
- Monitor Event logs

### Fault & Performance Management

- Proactively identify performance degradations using thresholds
- Gain visibility with Intelligent alarm correlation and color coded alarms
- Process SNMP Traps & Syslogs
- Receive Email / SMS notifications
- Log automatic trouble tickets and assign technicians using ServiceDesk Plus Integration.
- Automatically execute self healing scripts/programs when a fault occurs
- Acknowledge alarms and add operator notes
- Automatically escalate critical alarms that are unresolved
- Prevent false alarms using Downtime Scheduler

### Quick Troubleshooting Tools

- Real-time performance graphs
- Switch Port Mapper
- Provision to disable ports administratively
- Remotely connect to servers using MS terminal service or Telnet or SSH.
- SNMP MIB Browser and Syslog viewer
- Remote Server Process Diagnostics

### Adaptive Management

- Support for monitoring multi-vendor devices
- Business snapshots, groups devices based on:
  - o Regions eg: Austin view
  - o Logical grouping eg: Datacenter
  - o Business services eg: ERP
- Templates for over 650 device types and 232 interface types
- Customizable dashboards and Plasma/CCTV views
- Custom Device Templates
- Custom services monitoring over TCP
- Custom windows services monitoring
- Support for vendor specific SNMP Traps
- Monitors and analyzes specific characteristics of any SNMP manageable device

#### System Requirements:

<http://opmanageree.wiki.zoho.com/System-Requirements.html>

#### Contact us:

Email: [opmanager-support@manageengine.com](mailto:opmanager-support@manageengine.com) Phone: 925-965-5400.

Website: <http://www.opmanager.com>

**ZOHO Corp**, 4900, Hopyard Rd., Suite 310, Pleasanton, CA 94588 USA