

## Say Goodbye to **VULNERABILITIES**

Reduce Your Risk With Integrated Vulnerability  
Assessment, Remediation, Auditing and Reporting



## Vulnerability Management Solution

With 75 percent of enterprises expected to be infected with financially motivated, targeted malware that evaded traditional perimeter and host defenses<sup>1</sup>, it is clear that vulnerabilities must be addressed before it is too late.

Fortunately, there is a way. Lumension Security's Vulnerability Management solution enables you to effectively manage the entire vulnerability lifecycle – assessment, remediation, auditing and reporting – all from one, proven solution.

Lumension's Vulnerability Management Solution combines the network-based vulnerability scanning of PatchLink Scan™ with the agent-based assessment and patented remediation of PatchLink Update™ and PatchLink Developers Kit™ into a unified solution with a central management and reporting console that delivers:

- ▣ Thorough discovery and inventory of all network assets
- ▣ Automatic propagation of agents to rogue computers
- ▣ Accurate network- and agent-based threat assessments
- ▣ Patented vulnerability remediation
- ▣ Validation of compliance with security policies
- ▣ Comprehensive and actionable reporting
- ▣ Consolidation of security resources
- ▣ Extensive patch and vulnerability repository of more than 19,000

### Solution Overview

Consolidated management of the entire vulnerability lifecycle all from within a single, proven solution:

- ▣ Comprehensive discovery and assessment of all IT assets
- ▣ Automated remediation of vulnerabilities and configuration issues
- ▣ Extensive enterprise-wide reporting

### Managing the Vulnerability Lifecycle

Proper management and control of IT assets includes enforcing configuration policies and remediating vulnerabilities, which pose great risk to the enterprise if they are exploited (by an outside attacker or by an insider). Such vulnerabilities are prevalent 'in the wild' today as 24 vulnerabilities are identified every day, of which 12.5 are considered serious enough for IT staff to address each day<sup>2</sup>. Automation tools allow hackers to identify and exploit these vulnerabilities at a faster rate than ever before.

Vulnerabilities also pose great risk to the organization if found by an external auditor, who can determine that the organization's controls and policies are not up to certain regulatory standards.

In order to maintain compliance with regulatory standards and in order to maintain a threat-free and managed environment, enterprises need a solution that offers complete coverage of vulnerabilities (i.e. anti-virus, sharing tools, worms, trojans, configuration issues, etc.) on all network assets, including servers, routers, printers, laptops, operating systems, applications, wireless access points and more. Retaining visibility into your environment and providing comprehensive reporting capabilities are of utmost importance so that you can automatically identify and remediate issues and provide validation of security policies against industry standards and compliance with IT security aspects of federal regulations.

## A Proven Process

Lumension delivers complete vulnerability management through a market-validated process that includes complete asset discovery and inventory, comprehensive assessments based upon network-based and host-based scans, intelligent, automated remediation and ongoing policy compliance audits – all from a single, management console for a unified view and enterprise-wide reporting.

### Centralized Management & Reporting

with PatchLink Security Management Console™

### Comprehensive Threat Assessment

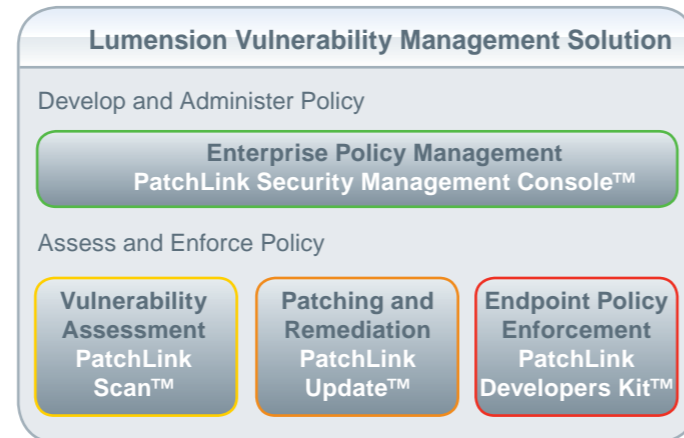
with PatchLink Scan™

### Intelligent Patch Management and Validation

with PatchLink Update™

### Rapid Remediation of Configuration Issues

with PatchLink Developers Kit™



## PatchLink Security Management Console™

### Central Command and Reporting

The PatchLink Security Management Console provides centralized, role-based management of PatchLink assessment and remediation engines, a consolidated view of all threat management activities and a central source for report generation.

- Thorough discovery and accurate inventory of all network assets – routers, printers, servers, laptops, operating systems, switches, wireless access points and more.
- Automatically propagates agents to unmanaged (rogue) computers for complete protection.
- Enterprise-wide command and control of network or agent-based scans, policy enforcement, patch distribution, inventory management, and more.
- Aggregated view of vulnerability assessment and remediation results from various PatchLink Scan and PatchLink Update engines across a true n-tier network, into a single point for local or enterprise reporting.

## PatchLink Scan™

### Network-Based Vulnerability Assessment

PatchLink Scan provides accurate and thorough network-based (agent less) vulnerability assessments using safe, flexible scanning techniques. Once threats are identified, PatchLink Scan helps you prioritize them for remediation based upon vulnerability scoring and asset criticality.

- Flexible network-based scanning techniques based on access-levels, including credentialed and null based scans.
- Broad scans of every device on your network, including servers, printers, routers, wireless access points, and many more.
- Detailed assessment checks on security configurations, anti-virus, sharing tools, worms, trojans, missing patches, open ports, services and more.
- Designed to safely scan for vulnerabilities with minimum impact to your network by never employing malicious attacks. Scanning methodology uses safe, standard networking protocols.

## PatchLink Update™

### Agent-Based Assessment and Remediation

PatchLink Update provides automated patch deployment and ongoing audits of applied patches for proactive security and continuous policy compliance. PatchLink Update, the market-leading patch management solution, enables you to patch more machines, faster and more accurately than ever before.

- Scalable, agent-based architecture that reduces bandwidth consumption and ensures security of mobile computers that are often removed from the network.
- Flexible, role-based administration with Active Directory integration enables the delegation of agent/group management, assessment and remediation activities to improve productivity while maintaining security.
- Mandatory Baseline capability that provides automatic support for security policy enforcement.
- Extensive patch repository of pre-tested patches and security updates that delivers complete coverage for heterogeneous environments.

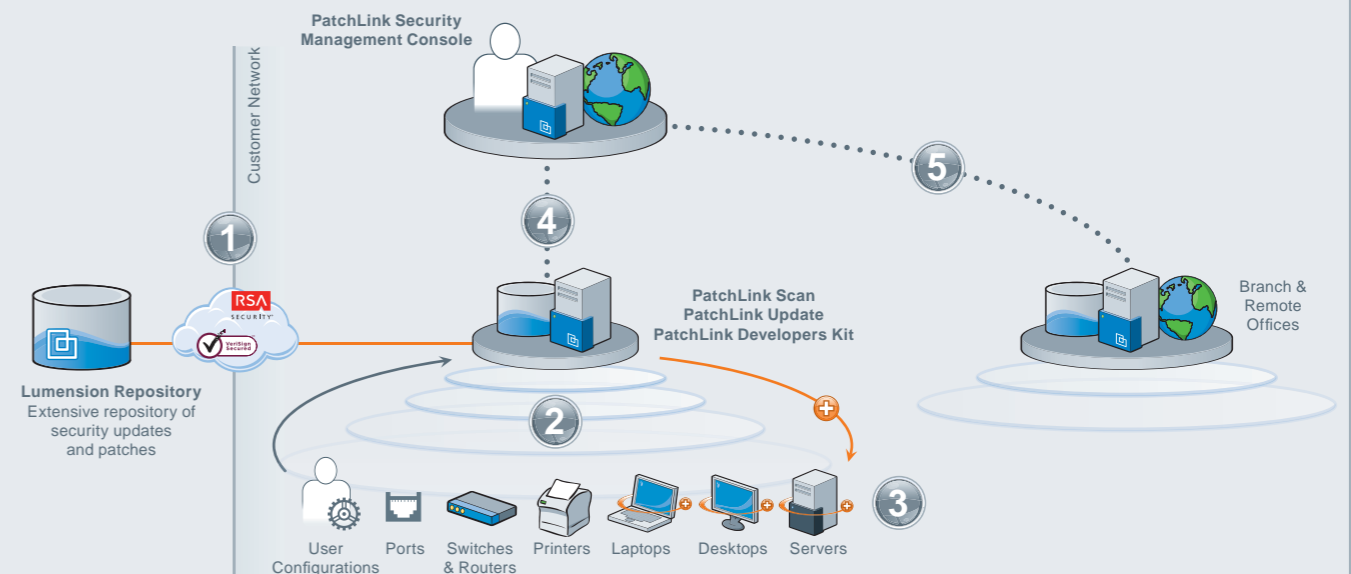
## PatchLink Developers Kit™

### Custom Threat Remediation

PatchLink Developers Kit enables administrators to develop and deploy custom vulnerability remediation content to address security threats that are not software related, or for which there is no publicly available patch. Using PatchLink Developers Kit, you can quickly eliminate hardware configuration issues, update application settings, remove unauthorized files and applications, enforce security policies, patch custom software, respond to zero-day vulnerabilities, distribute commercial or proprietary software, and much more.

- Enforce Configuration Policies
- Respond to Zero-Day Threats
- Develop Custom Patches
- Distribute Software and Data

## How It Works



1. Lumension securely delivers encrypted vulnerability updates and remediation patches via a Global Subscription Service.

2. Network-based vulnerability assessment scans identify IT assets and prioritize the security threats found on those assets.

3. All endpoints are brought into compliance with policy baselines through automated patching and custom remediation packages.

4. The enterprise console delivers a consolidated view of your security policy compliance, with actionable solutions.

5. Our true n-tier solution enables global policy enforcement from a single console.

## Common Criteria EAL2 Certified

The Canadian Common Criteria Evaluation and Certification Scheme (CCS) Certification Body has asserted that Lumension's Vulnerability Management solution complies with the specified security requirements.

## Add-on Product

### PatchLink Enterprise Reporting™

Centralized business intelligence solution that enables organizations utilizing PatchLink Update to consolidate security data from across the enterprise, assess business risk through powerful data mining analysis, and demonstrate security policy and regulatory compliance status through flexible, customized reporting.

## Also available from Lumension

Lumension's Endpoint Security Solution delivers policy-based application and device control that proactively secures your enterprise endpoints from data threats, including data leakage, malware and spyware.

## About Lumension

Lumension Security is a leading global security management company, providing unified protection and control of all enterprise endpoints, applications and devices to more than 5,100 customers and 14 million nodes worldwide. Lumension enables organizations to effectively manage risk at the endpoint by delivering best-of-breed, policy-based solutions, including vulnerability management, endpoint policy enforcement and extensive policy compliance reporting.

## Take Control of the Vulnerability Lifecycle

See how you can manage the entire vulnerability lifecycle by contacting your local Lumension sales representative, reseller or by visiting us at [www.lumension.com](http://www.lumension.com).

## What Our Customers Are Saying

"PatchLink has moved the organization from a reactive security approach to a proactive security strategy. Before PatchLink, we couldn't keep up with vulnerability patching and software upgrades. Now, we have a comprehensive, automated vulnerability management solution that meets the needs of our mobile organization and I'm proud to say, we have not had any viruses since deploying PatchLink."

### Booz Allen Hamilton

"Managing a diverse network environment across 20 different locations is no longer a full-time job for our IT staff as PatchLink has been instrumental in mitigating risks and relieving IT security pain. It is a robust solution that delivers high performance, thorough assessment, remediation and continuous monitoring to ensure it works around the clock to secure our network without disrupting our computing environment."

### MidMichigan Medical Center

### Sources:

1. Gartner Research, "Gartner's Top Predictions for IT Organizations and Users, 2007 and Beyond," Daryl C. Plummer, December 1, 2006
2. National Vulnerability Database - May 9, 2007



### Lumension Security - Luxembourg

Atrium Business Park  
Z.A. Bourmicht  
23, rue du Puits Romain  
L-8070 Bertrange  
Luxembourg  
+352 265 364 11 / [www.lumension.com](http://www.lumension.com)

©2008 Lumension Security. All rights reserved. Lumension Security, the Lumension Security logo, and the PatchLink and Sanctuary product names and logos are either registered trademarks or trademarks of Lumension Security. In addition, other companies' names and products mentioned in this document, if any, may be either registered trademarks or trademarks of their respective owners.